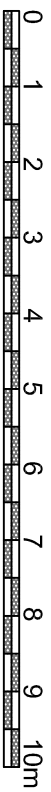


GROENKLOOF RIDGE, GEORGE - TYPE B

NORTH - DECEMBER 2010 - PAGE 2 OF 3

J WEST ARCHITECT (TEL 084 302 7728)

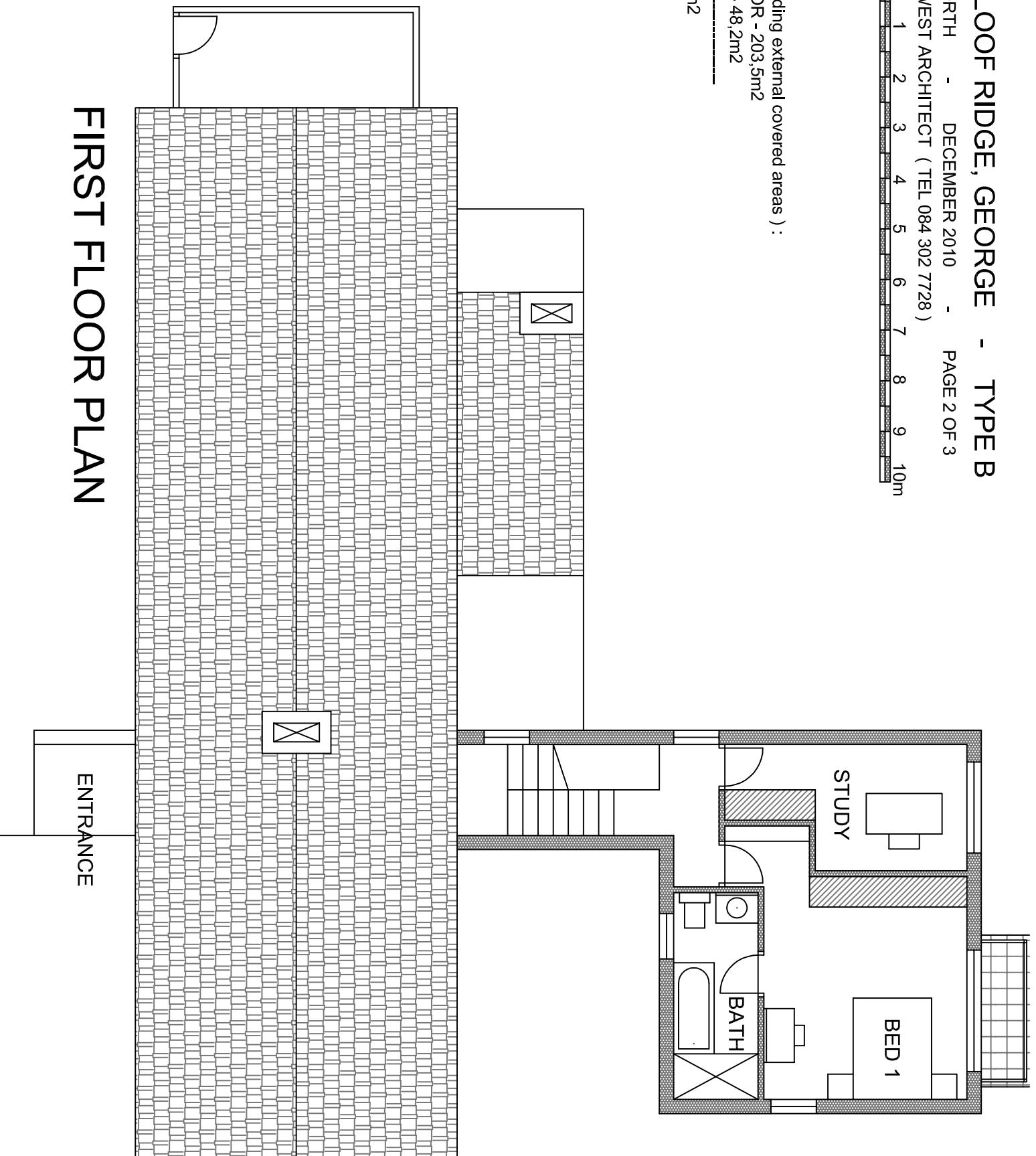


AREAS - (Including external covered areas) :

GROUND FLOOR - 203,5m²

FIRST FLOOR - 48,2m²

TOTAL - 251,7m²



FIRST FLOOR PLAN